

SUBMITTAL DATA INFORMATION

Engineering Specifications

Construction. The one piece chassis and grille is manufactured from high grade zinc coated steel. The grille and exposed parts of the chassis are painted with a neutral color baked enamel finish.

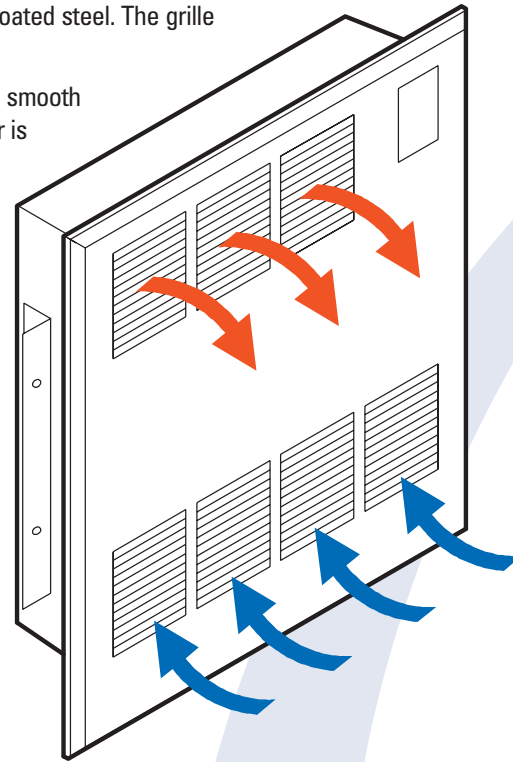
Heat Exchanger. A highly efficient, headered coil, made of copper tubes expanded into smooth aluminum plate fins (10 FPI), tested at 300 PSI, and sealed for quality. The heat exchanger is positioned in the unit for maximum heat transfer over the coil.

Fan and Motor Assembly. High spec tangential SEL fan and motor assembly consists of high static fan wheel and scroll, detachable motor, replaceable "easy glide" sleeve bearings, and the fan and motor cut out are protected to UL/CSA specifications. This fan and the motor assembly are designed to run whisper quiet without vibration.

Controls. The units have integral two speed, max.-off-min., fan switches. The LTC – low limit aquastat is also a high spec item with a close tolerance designed to close on a rise to 130°F+/-3°F and open at 110°F+/-3°F. For low temperature systems you will have to change out the aquastat located in the main electrical box easily removed from its hold on clip.

Water Connections. Supply and return connections are ½" sweat connections located to the right of the unit as you face the grille. A water vent with wide convenient screwdriver slot is accessible through the grille.

Electrical Connections. 120/60/1 power supply is required. All that's required is to knock out the junction box hole you want to use and wire to the L1 and L2 leads. There is a convenient one screw access plate on the top of the unit to get at the ground.



The Pocket Wall Unit

Models
PWU 4/6
PWU 8/10
PWU 13/15

Fully Integrated
Pocket Wall Fan
Convactor

- The PWU Pocket Wall Units come completely assembled and ready to install... no assembly of a kickspace unit and separate wall kit is required
- 3 sizes with outputs ranging from 2,000 BTU/HR to 15,000 BTU/HR
- Whisper quiet operation that Quiet-One products are known for
- Attractive and highly crafted grille design
- Easily accessible air vent is built into the product
- Two position speed control hidden behind access door
- 5 year warranty

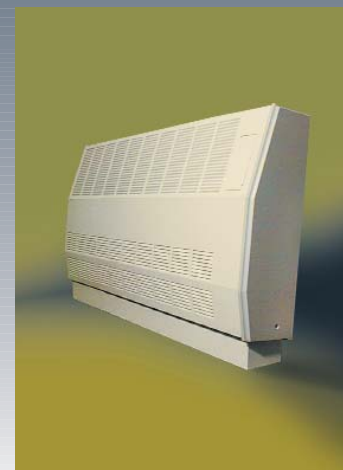
Other products by Smith's Environmental



Quiet-One Kickspace Units



Cold Front Heat & Cool



PSU Fan Convectors



FL-100 In-Floor Unit



ENVIRONMENTAL PRODUCTS®

300 Pond St., Randolph, MA 02368 • (781) 986-2525 • fax (781) 986-8934



ENVIRONMENTAL PRODUCTS®

Features & Benefits

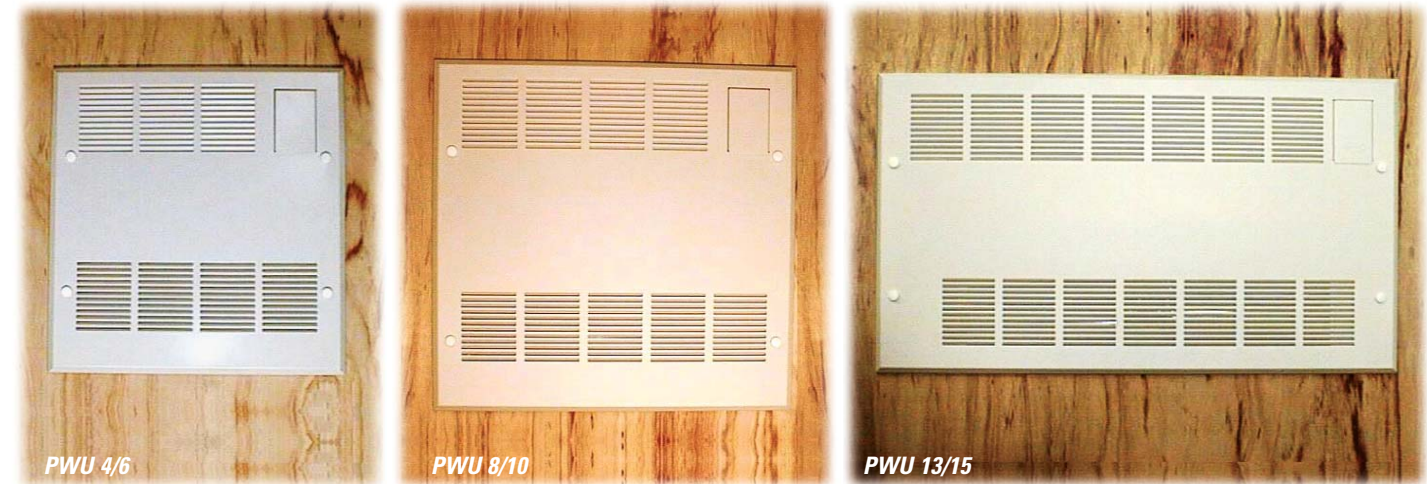
- Completely Assembled**
 self-contained heating unit comes out of the box ready to install.
- 3 sizes to choose from**
 PWU-4/6 — 2,000-6,000 BTU/Hr.
 PWU-8/10 — 4,000-9,000 BTU/Hr.
 PWU-13/15 — 8,000-15,000 BTU/Hr.
- Quality Sheet Metal**
 The PWU grille and chassis are quite possibly the finest examples of sheet metal crafting in the industry.
- Quiet Performance**
 In the tradition of The Quiet-One family, the PWU is a silent, yet powerful performer thanks to our proven Teflon bearing technology.
- Protrudes only 7/8"**
 This makes the PWU the perfect choice in applications where space is at a premium.
- Header Type Coil**
 This mechanically bonded heat exchanger is positioned in such a way that it fully utilizes the air stream as it gently thrusts heat into the room.
- 5 Year Warranty**
 Our confidence in the quality of our products allows us to extend this generous warranty.
- User Friendly Features**
 2 speed fan control and air vent are easily accessed through our finely crafted, unique gravity-glide access door.
- Installer Friendly Features**
 Our integrated design assures you'll be off the job quickly.
- Adheres to Rigid Test Standards**
 Our products are tested to UL, CSA, BSIRA and RTS standards.



Designed to deliver maximum heat in the minimum amount of space... quietly and reliably

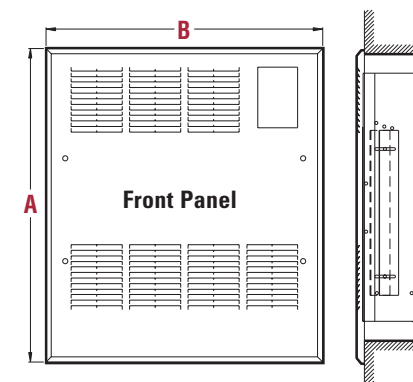
The Pocket Wall Unit

The perfect product for foyers, hallways, family rooms, finished basements and even for taking the chill off of a garage



PWU BTU/HR Ratings at high speed - Water Flow Rate (Gallons Per Minute)									
Entering Water Temperature (°F)	1 GPM			3 GPM			5 GPM		
	Model 4/6	Model 8/10	Model 13/15	Model 4/6	Model 8/10	Model 13/15	Model 4/6	Model 8/10	Model 13/15
140°	2529	4185	7002	3294	5211	8154	4050	6030	8640
150°	2961	4689	8352	3645	5724	9045	4410	6480	9675
160°	3285	5175	9180	4050	6291	10017	4815	7110	10575
170°	3663	5634	10215	4482	6966	11556	5220	7840	12060
180°	3906	6174	11088	4941	7614	13068	5490	8505	13500
190°	4167	6696	12105	5292	8289	14121	5895	9180	14715
200°	4572	7200	12951	5670	8991	15120	6390	9855	15795

Ambient air temp: 65°F • Flow rates 1, 3 and 5 Gallons per Minute



Dimensions						
Front Panel	A		B			
PWU 4/6	19½"		17½"			
PWU 8/10	19½"		21"			
PWU 13/15	19½"		31½"			
Chassis	C	D	E	F	G	
PWU 4/6	17½"	7½"	3/8"	14½"	3½"	
PWU 8/10	17½"	7½"	3/8"	18½"	3½"	
PWU 13/15	17½"	7½"	3/8"	28½"	3½"	

